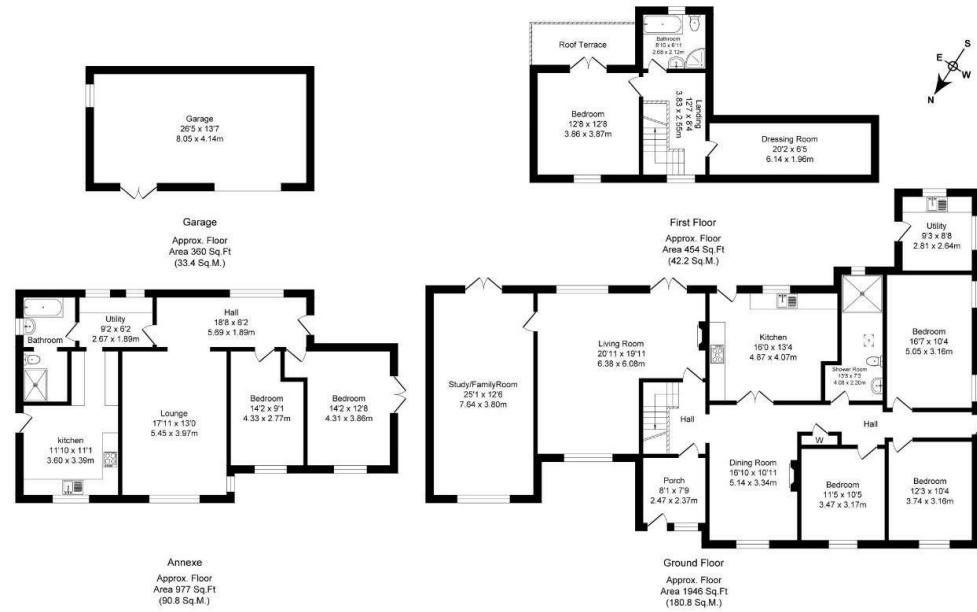




Thornton Common Road, Thornton Hough
Total Approx. Floor Area 3737 Sq.ft. (347.2 Sq.M.)

Surveyed and drawn by Lena Media for illustrative purposes only. Not to scale. Whilst every attempt was made to ensure the accuracy of the floor plan, all measurements are approximate and no responsibility is taken for any error.



Thornton Common Road, Thornton Hough, Wirral CH63 0LU

Asking Price £900,000

6 Bedroom 4 Reception 3 Bathroom F

Welcome to Rosebank Cottage,

Nestled within serene countryside, Rosebank exudes charm and character at every turn. Originally a small holding with a two roomed cottage & cow shed dating back to the 1900's this beautiful cottage has been tastefully extended over the years. A four-bedroom cottage with a separate two-bedroom annex.

As you approach the property, you're greeted by a picturesque wisteria arch leading to the entrance. Step inside the porch, kick off your shoes - admire the welcoming space.

The lounge, with its double aspect allows sunlight to dance into the room, creating a warm atmosphere. Continuing through and you'll find a second reception room, utilised as a library and office, offering a tranquil space for work /leisure.

The bespoke custom-built country-style kitchen, with solid oak cabinets, granite work tops and range cooker, is a chef's delight, ideal for preparing delicious meals. The adjacent breakfast table provides a charming spot to enjoy your morning coffee. For formal dining, the dining room overlooks the front garden. To the ground floor, you'll find three bedrooms, one currently used as a study, and a large wet room.

ROSEBANK (Main House)

Front Entrance

Hall

Lounge

20'8" x 19'8" (6.3 x 6.0)

Dining Room

16'8" x 10'9" (5.1 x 3.3)

Kitchen

15'8" x 13'1" (4.8 x 4.00)

Utility

Study / Library Room

24'11" x 12'5" (7.6 x 3.8)

Bedroom

16'4" x 10'2" (5.00 x 3.1)

Bedroom

12'1" x 10'2" (3.7 x 3.1)

Bedroom

11'1" x 10'2" (3.4 x 3.1)

Shower-Room

UPSTAIRS

Bedroom With Balcony

12'5" x 12'5" (3.8 x 3.8)

Bathroom

Dressing Room

20'0" x 6'2" (6.1 x 1.9)

THE ANNEXE

Front Entrance

Hall

Living Room

17'4" x 12'9" (5.3 x 3.9)

Bedroom

14'1" x 12'5" (4.3 x 3.8)

Bedroom

14'1" x 8'10" (4.3 x 2.7)

Kitchen

11'9" x 10'9" (3.6 x 3.3)

Bathroom

EXTERNALLY

Set in 2.5 acres of lush landscape, Rosebank offers a peaceful retreat with mature gardens. With plenty of spaces to enjoy the sunshine and entertain with friends and family. There's also a small meadow ideal for animal enthusiasts.

